

Excited to print your own pack of Complete Communities trading cards? Check out the tips below for the best results!

- Notice that page 2 is a sheet of trading card backs. Print page 2 on the back of each page of terms.
- When printing on both sides, check your printer's settings to identify the best method.
- For double-sided printing, select the long edge binding option in your print dialogue.
- Notice the hash marks located at all four corners of each card. Cut along these lines when cutting a sheet into individual cards.

Have fun! We would love to hear how you are using our cards. Tag us on Twitter and Facebook to let us know, and visit our website to find more trading cards and strategies to make your community complete!



**Complete
Communities**



**Complete
Communities**



**Complete
Communities**



**Complete
Communities**



**Complete
Communities**



**Complete
Communities**

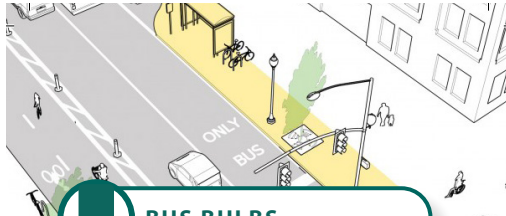




BUFFER

An area between the sidewalk and roadway that protects pedestrians from noise, wind, and splashes caused by vehicular traffic. Ideally, a buffer should be obstacle-free and provide landscaping to improve roadway aesthetics.

SOURCE: FEDERAL HIGHWAY ADMINISTRATION (FHWA)



BUS BULBS

Curb extensions that align the bus stop with the parking lane, allowing buses to stop and board passengers without ever leaving the travel lane.

SOURCE: NACTO URBAN STREET DESIGN GUIDE



CHICANES

Offset curb extensions on residential or low volume downtown streets create a chicane effect that slows traffic speeds considerably.

SOURCE: NACTO URBAN STREET DESIGN GUIDE

Complete Communities

COMPLETECOMMUNITIESDE.ORG
/COMPLETECOMMUNITIESDE
@COMPCOMMUNITYDE

Complete Communities

COMPLETECOMMUNITIESDE.ORG
/COMPLETECOMMUNITIESDE
@COMPCOMMUNITYDE

Complete Communities

COMPLETECOMMUNITIESDE.ORG
/COMPLETECOMMUNITIESDE
@COMPCOMMUNITYDE



COMPLETE STREETS

Streets planned, designed, built, and maintained to safely accommodate travelers of all ages and abilities.



CURB EXTENSION

Visually and physically narrow the roadway, creating safer and shorter crossings for pedestrians while increasing available space.

SOURCE: NACTO URBAN STREET DESIGN GUIDE



MINI-ROUNDABOUT

Installed using simple markings or raised islands that lower speeds at minor intersection crossings and are an ideal treatment for uncontrolled intersections.

SOURCE: NACTO URBAN STREET DESIGN GUIDE

Complete Communities

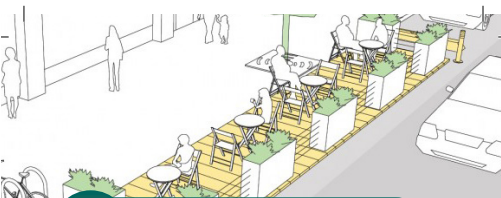
COMPLETECOMMUNITIESDE.ORG
/COMPLETECOMMUNITIESDE
@COMPCOMMUNITYDE

Complete Communities

COMPLETECOMMUNITIESDE.ORG
/COMPLETECOMMUNITIESDE
@COMPCOMMUNITYDE

Complete Communities

COMPLETECOMMUNITIESDE.ORG
/COMPLETECOMMUNITIESDE
@COMPCOMMUNITYDE



PARKLET

Public seating platforms that converts curbside parking spaces into vibrant community spaces.

SOURCE: NACTO URBAN STREET DESIGN GUIDE



PINCHPOINT

Curb extensions used as a traffic calming intervention applied midblock to slow traffic speeds and add public space.

SOURCE: NACTO URBAN STREET DESIGN GUIDE



ROAD DIET

Reduce lanes of travel to utilize the space for other uses and travel modes, such as on-street parking, transit lanes, bike lanes, or wider sidewalks.

SOURCE: FEDERAL HIGHWAY ADMINISTRATION

Complete Communities

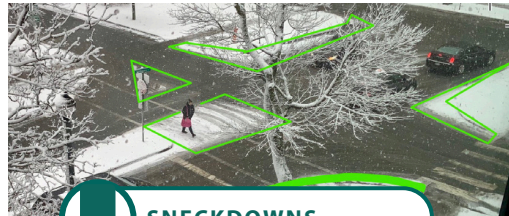
COMPLETECOMMUNITIESDE.ORG
/COMPLETECOMMUNITIESDE
@COMPCOMMUNITYDE

Complete Communities

COMPLETECOMMUNITIESDE.ORG
/COMPLETECOMMUNITIESDE
@COMPCOMMUNITYDE

Complete Communities

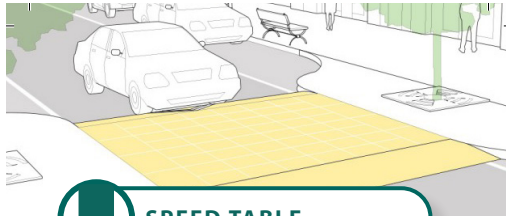
COMPLETECOMMUNITIESDE.ORG
/COMPLETECOMMUNITIESDE
@COMPCOMMUNITYDE



SNECKDOWNS

Also known as a snowy neckdown, a curb extension created by snowfall that demonstrates unused road space that could be allocated for walkers and bikers.

SOURCE: SKYRISE CITIES
PHOTO: SNECKDOWN HALIFAX



SPEED TABLE

Midblock traffic calming devices that raise the entire wheelbase of a vehicle to reduce its traffic speed, often used with pinchpoints or a pedestrian walkway.

SOURCE: NACTO URBAN STREET DESIGN GUIDE



TACTICAL URBANISM

A citizen-led approach to neighborhood building using short-term, low-cost, and scalable interventions to catalyze long-term change.

SOURCE: THE TACTICAL URBANIST'S GUIDE

**Complete
Communities**

COMPLETECOMMUNITIESDE.ORG
/COMPLETECOMMUNITIESDE
@COMPCOMMUNITYDE

**Complete
Communities**

COMPLETECOMMUNITIESDE.ORG
/COMPLETECOMMUNITIESDE
@COMPCOMMUNITYDE

**Complete
Communities**

COMPLETECOMMUNITIESDE.ORG
/COMPLETECOMMUNITIESDE
@COMPCOMMUNITYDE



TRAFFIC CALMING

Changes in street alignment, installation of barriers, and other physical measures to reduce traffic speeds or cut-through volumes, in the interest of street safety and livability.

SOURCE: DELAWARE TRAFFIC CALMING MANUAL

**Complete
Communities**

COMPLETECOMMUNITIESDE.ORG
/COMPLETECOMMUNITIESDE
@COMPCOMMUNITYDE